



DUTCHTOWN GYM BUILDING – 1938



DUTCHTOWN CLASSROOM BUILDING - 2018

2016 Bond Construction Update

MAY 7, 2019

MAY 7, 2019



2016 Bond Issue - Project Status Report

May 7, 2019

Campus	Project	Architects	Status
Ascension Head Start	Addition/Renovations	Chenevert	Near Complete
Lowery Middle School	Addition/Renovations	Domain	Near Complete
Dutchtown Primary School	Addition/Renovations	Remson Haley Herpin	Under Construction
APPLe Digital Academy	Renovations	Holly and Smith	Under Construction
Bullion Primary	New Primary School	Remson Haley Herpin	Under Construction
Bluff Middle (Bluff Rd)	New Middle School	Grace and Hebert	Under Construction
Various Primary Schools	Covered Play Pavilions	Crump Wilson	11 Complete, 4 Under Construction
Districtwide	Security Improvements	SDS	16 Sites Under Construction, 4 Sites bidding in June 2019
Bluff Ridge Primary (Hwy 73)	New Primary School	Domain Architecture	Bids Due May 23, 2019
Sugar Mill Primary (Germany Rd)	New Primary School	Gossen Holloway Cortez	Bids received in April 2019 were over budget. Will rebid as soon as possible
Prairieville Middle School	New Gymnasium	GGB Architects	Bids taken in 2018 were over budget. New Bids are due in June 2019
St. Amant High School	Complete the Freshman Academy Concept	Grace & Hebert	Bids Due May 30, 2019
Donaldsonville High School	Renovation of Old Library	Grace and Hebert	Bids Due in June 2019
Parker Road Site	Future High School Site Planning/Permitting	RHH/Domain	In Design
East Ascension High School	Complete the Freshman Academy Concept	Gossen Holloway Cortez	Program Confirmation Phase

Pre-Design - This step involves gathering the information necessary for the Architect to Design the Building. Survey, geotechnical report, drainage study, traffic study, wetlands permitting, educational specifications are some of the items that must be prepared prior to hiring the Architect. Once these are in place, the design phase can start.

Design Phases - The Architect prepares a series of drawings and cost estimates leading up to a set of construction documents that will be used to solicit contractor bids for the project. This phase can take anywhere from 4-12 months depending on the size of the project. (Sub Phases Include: **Program Confirmation, Schematic Design, Design Development, Construction Documents, Bidding, Award, Contracting**)

Construction Phase - Once a contractor has been selected, a contract will be signed. The contract will include a fixed duration that can be extended only through contract terms such as rain delay or other owner delays.

MAY 7, 2019

BULLION CROSSING NEW PRIMARY SCHOOL

STATUS – UNDER CONSTRUCTION

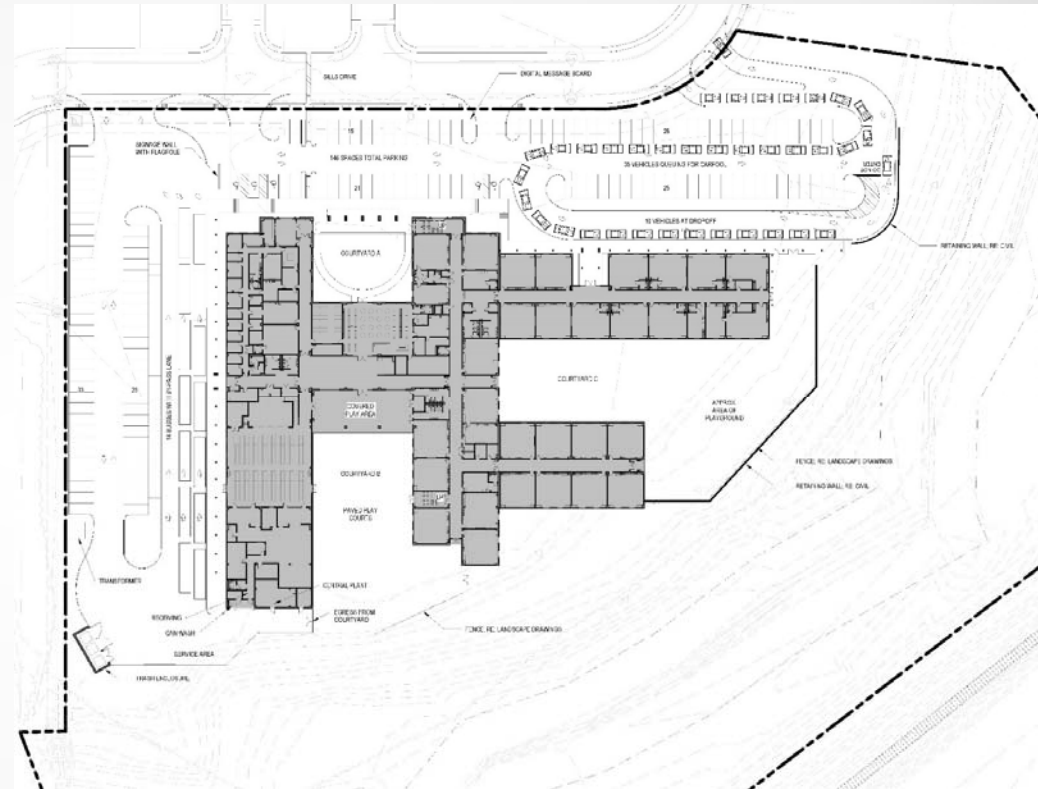
CONTRACTOR - STUART AND COMPANY

CONTRACTUAL COMPLETION IS SEPTEMBER 2019

MAY 10 SITE VISIT BY SUPERINTENDENT TO
EVALUATE THE PROGRESS

PLAN A – MOVE IN WITH PARTIAL OCCUPANCY

PLAN B – HOST THE BULLION STUDENT BODY AT OGP
UNTIL THE BUILDING IS READY



MAY 7, 2019

BULLION CROSSING NEW PRIMARY SCHOOL



MAY 7, 2019

BULLION CROSSING NEW PRIMARY SCHOOL



MAY 7, 2019

BULLION CROSSING NEW PRIMARY SCHOOL



MAY 7, 2019

BLUFF MIDDLE SCHOOL

STATUS – UNDER CONSTRUCTION

CONTRACTOR - CANGELOSI WARD

CONTRACTUAL COMPLETION IS JULY 2020

CURRENTLY CONSTRUCTING THE BUILDING FOUNDATION



MAY 7, 2019

SUGAR MILL PRIMARY- GERMANY ROAD

STATUS – BIDDING

BIDS WERE RECEIVED ON APRIL 23, 2019.

LOW BID WAS \$18,697,000 – 5 MILLION OVER BUDGET

THE BID REVIEW COMMITTEE HAS RECOMMENDED REJECTION AND REBID AS SOON AS POSSIBLE.

THIS ITEM IS ON THE CONSENT AGENDA MAY 7, 2019.

STAFF HAS DEVELOPED A LIST OF VALUE ENGINEERING ITEMS TO GET THE PROJECT COST DOWN

THE WETLAND PERMIT IS EXPECTED NEXT WEEK

MAY 7, 2019



SUGAR MILL PRIMARY- GERMANY ROAD



MAY 7, 2019

SUGAR MILL PRIMARY- GERMANY ROAD



MAY 7, 2019

BLUFF RIDGE PRIMARY SCHOOL

STATUS - BIDDING

THE BID DATE IS MAY 23, 2019

BOARD AWARD IS JUNE 4, 2019

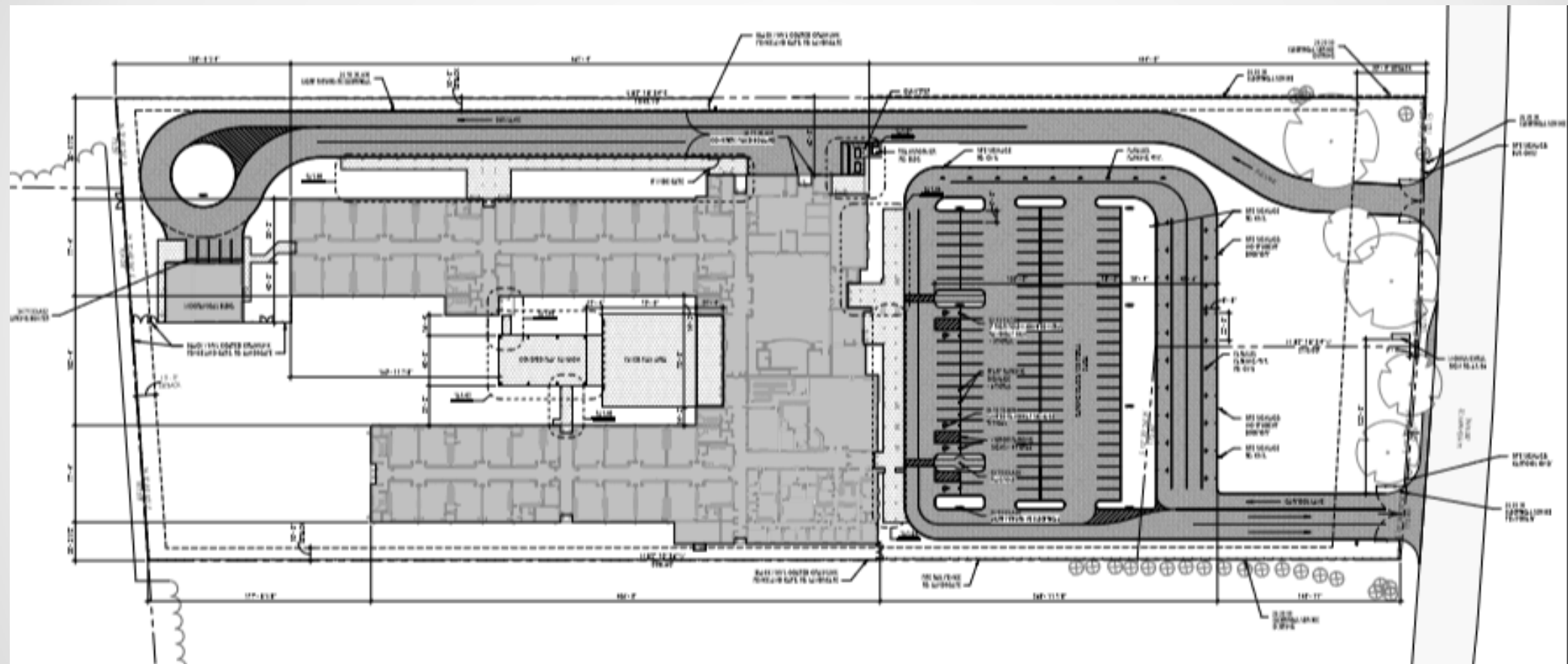
14 MONTH CONSTRUCTION TIME

WETLANDS PERMIT IS PENDING



MAY 7, 2019

BLUFF RIDGE PRIMARY SCHOOL



MAY 7, 2019

12

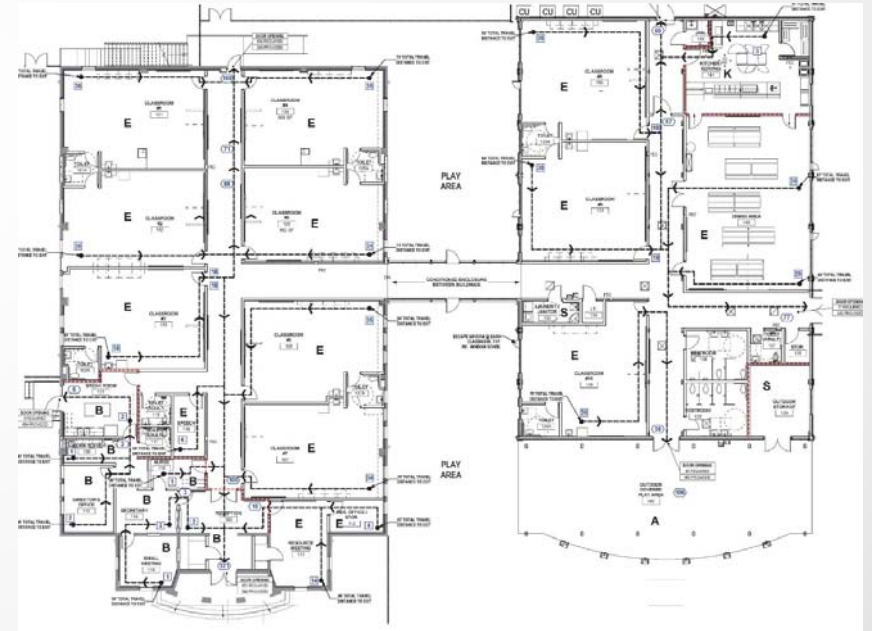
ASCENSION HEAD START RENOVATIONS

STATUS – UNDER CONSTRUCTION

NEAR COMPLETE

MOVE PLANNING IS UNDERWAY

WE WILL SOON BE ABLE TO OCCUPY THE ENTIRE FACILITY



MAY 7, 2019

ASCENSION HEAD START RENOVATIONS



MAY 7, 2019

ASCENSION HEAD START RENOVATIONS



MAY 7, 2019



LOWERY OFFICE AND CLASSROOM ADDITION



STATUS – UNDER CONSTRUCTION

NEAR COMPLETE

CONTRACTOR IS J REED

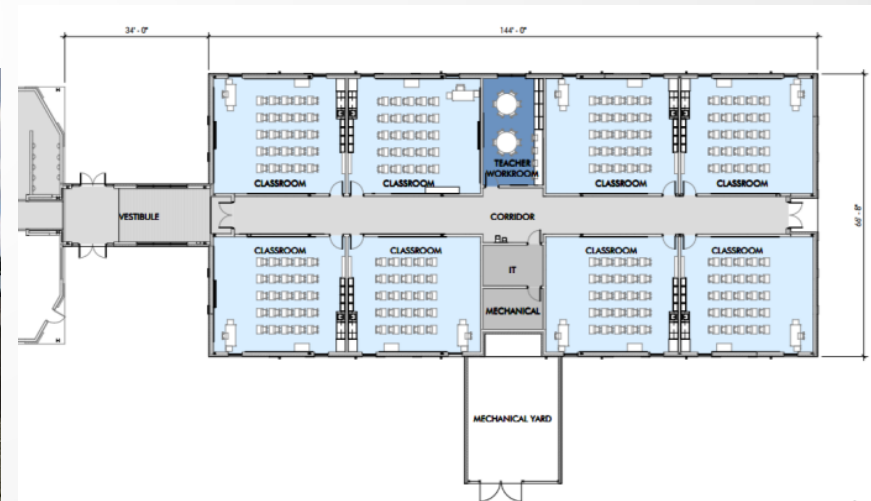
MOVE PLANNING IS UNDERWAY



MAY 7, 2019

16

LOWERY CLASSROOM ADDITION



MAY 7, 2019

DHS - REPURPOSE THE OLD LIBRARY

STATUS – BIDDING SOON

CONSTRUCTION DOCUMENTS ARE COMPLETE

1ST ADVERTISEMENT IS PENDING



MAY 7, 2019

18

DUTCHTOWN PRIMARY CLASSROOM ADDITION

STATUS – UNDER CONSTRUCTION

CLASSROOM BLDG MUST BE COMPLETE THIS SUMMER

MOVE PLANNING IS UNDERWAY

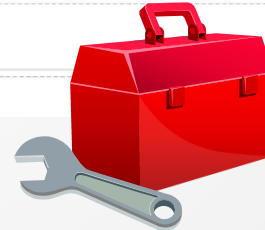
OFFICE RENOVATION BEGINS THIS SUMMER



MAY 7, 2019

19

OFFICE RENOVATION AND SECURITY PORTAL

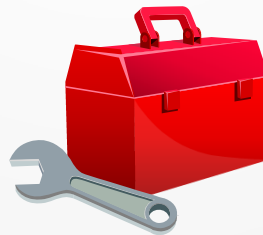


20

APPLe RENOVATIONS/ADDITIONS



ENTRANCE MODIFICATIONS



MAY 7, 2019

STATUS – UNDER CONSTRUCTION

NEAR COMPLETE

THE RENOVATION OF THE EXISTING BUILDING IS EXPECTED TO BE COMPLETE IN MAY

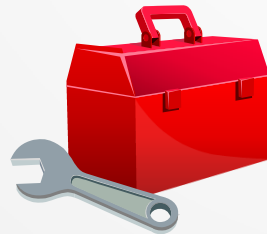
THE ADDITION IS EXPECTED TO BE COMPLETE IN JUNE



APPLe RENOVATIONS/ADDITIONS

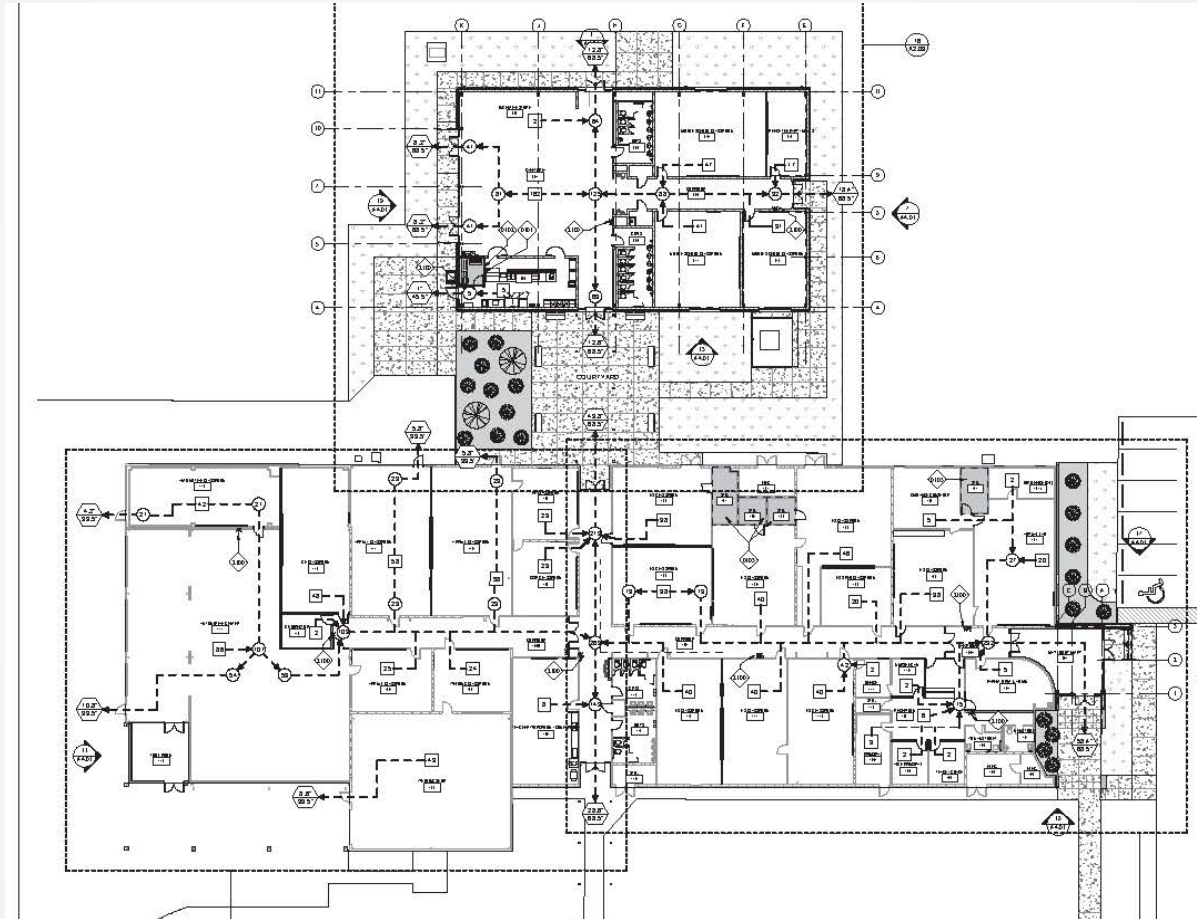


NEW DINING SPACE AND FOOD PREP/SERVING AREA



MAY 7, 2019

APPLe RENOVATIONS/ADDITIONS



MAY 7, 2019

AIRLINE HIGHWAY

PRAIRIEVILLE MIDDLE SCHOOL – GYM ADDITION

STATUS – BIDDING – 2ND TIME

PREVIOUSLY BID OVER THE BUDGET IN 2018

NEW BIDS ARE DUE IN JUNE 2019

REDESIGN IS EXPECTED TO BE NEAR THE BUDGET



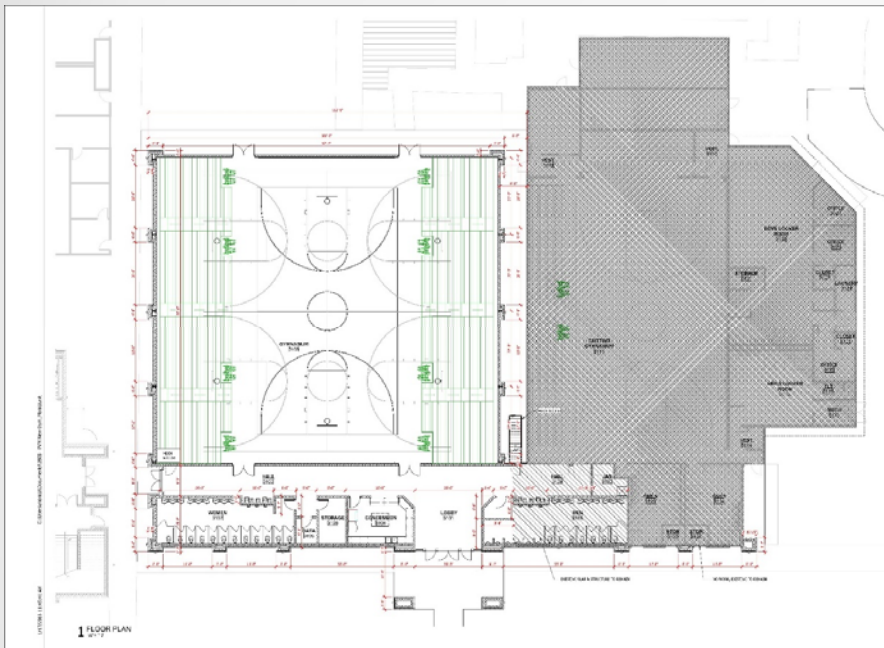
2018 DESIGN COVERED THE FRONT OF THE OLD GYM



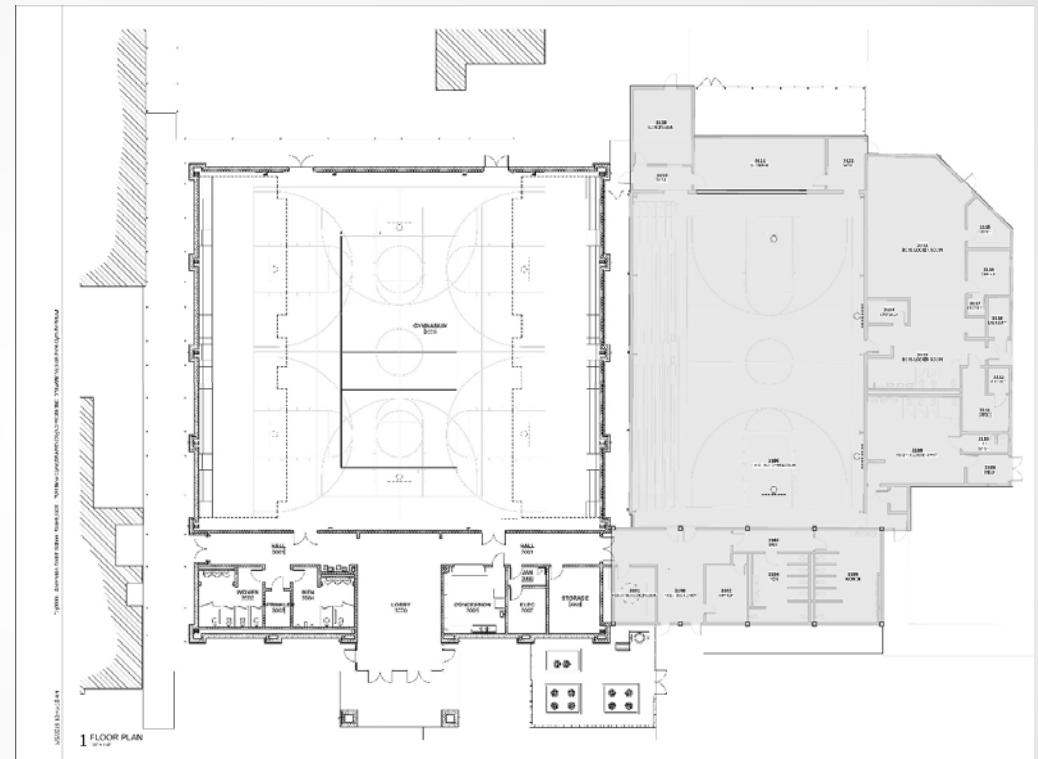
2019 DESIGN IS A SIMPLIFIED VERSION OF THE LOBBY AND THE SAME GYM LAYOUT

MAY 7, 2019

PRAIRIEVILLE MIDDLE SCHOOL – GYM ADDITION



2018 DESIGN COVERED THE FRONT OF THE OLD GYM



2019 DESIGN IS A SIMPLIFIED VERSION OF THE LOBBY AND THE SAME GYM LAYOUT

MAY 7, 2019

25

PRAIRIEVILLE MIDDLE SCHOOL

HISTORICAL RECORD OF PMS FROM 1951 TO PRESENT



MAY 7, 2019

PRAIRIEVILLE MIDDLE TRANSITION PHOTOS

1951 TO APRIL 2012



APRIL 2012-
MARCH 2015



MARCH 2015 TO MAY 2019



MAY 7, 2019

PRAIRIEVILLE MIDDLE SCHOOL

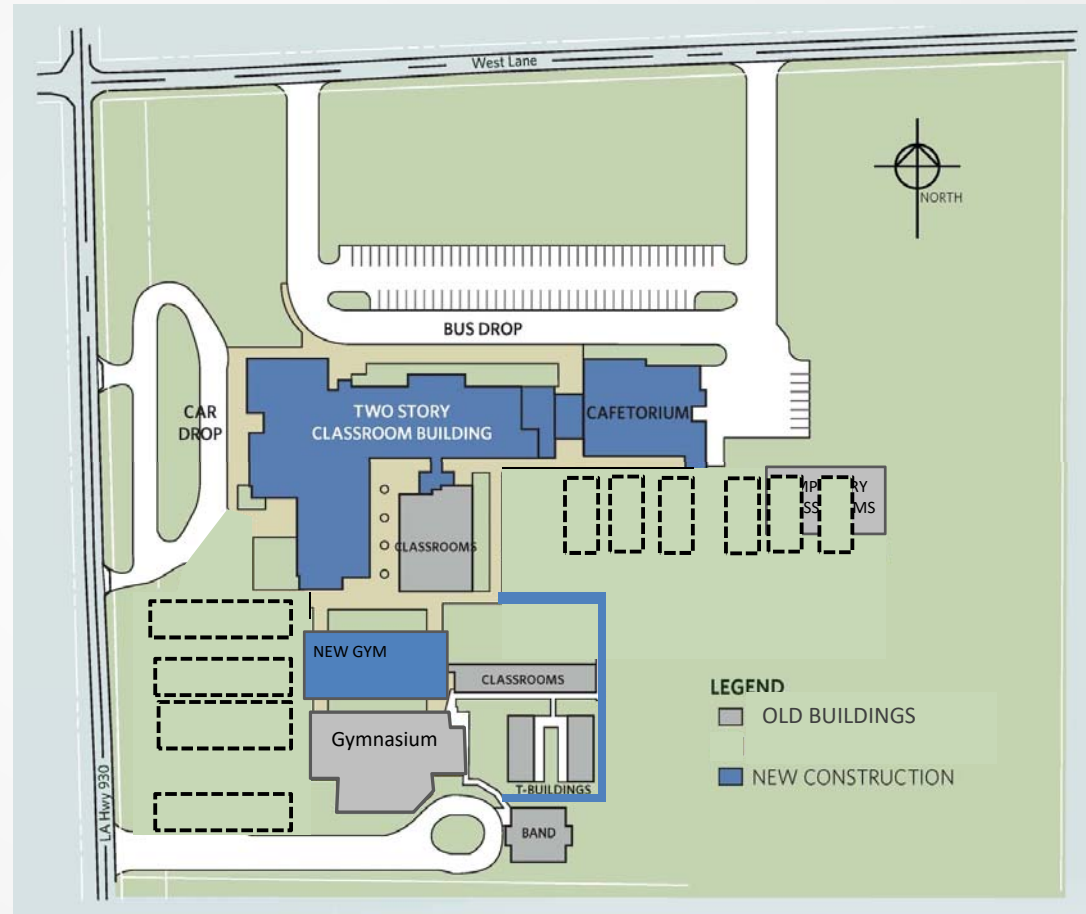
NEXT STEPS

DEMO BLDG E, H AND J IS COMPLETE

REROUTE SEWER IS COMPLETE

CONNECTING CANOPY IS COMPLETE

ADD GYM AND PARKING -
PROJECT REBID JUNE 2019



MAY 7, 2019

ST. AMANT HIGH – CORE RENOVATION IN THE OLD ADMIN BUILDING

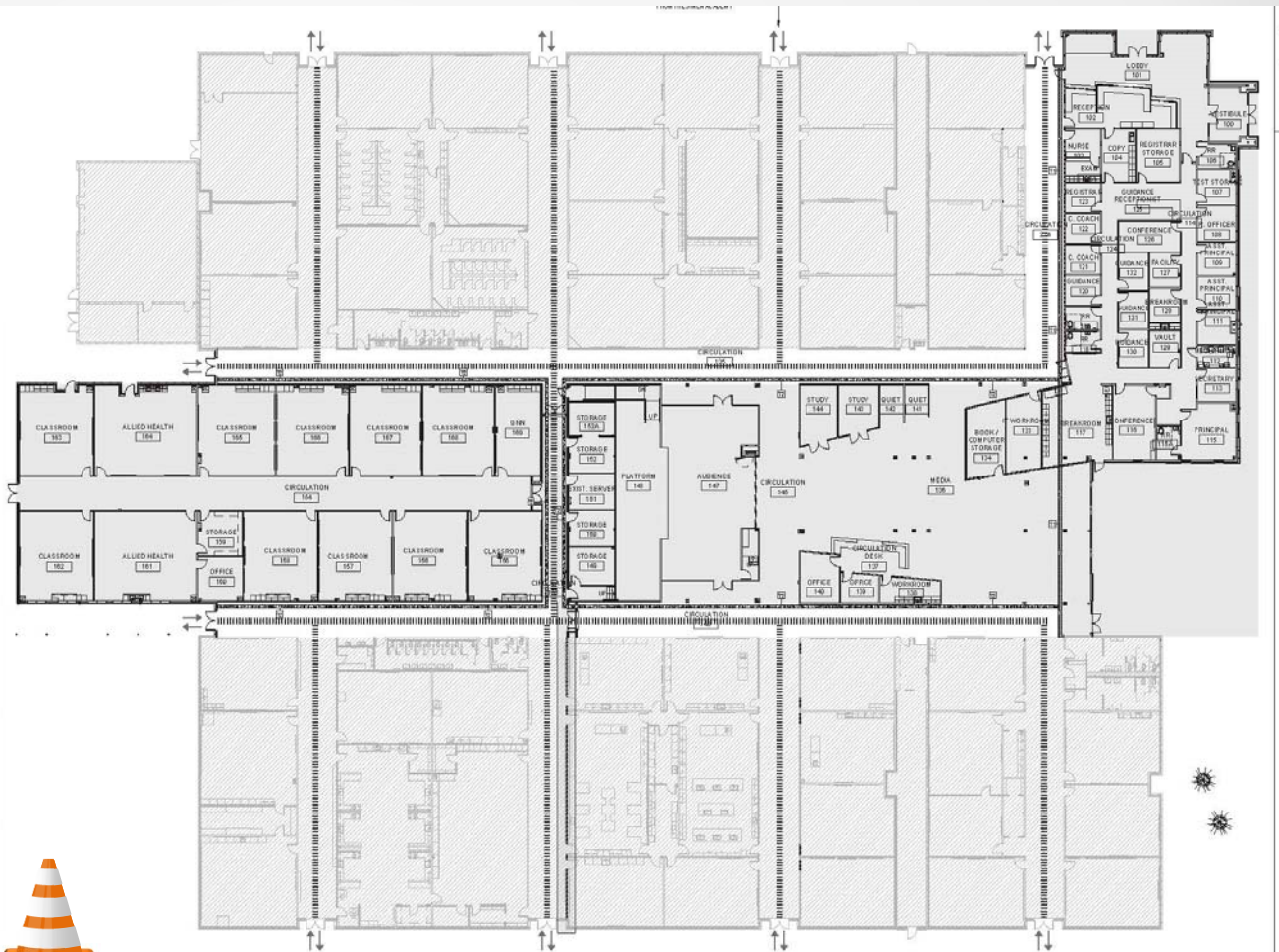
STATUS - BIDDING

BIDS ARE DUE MAY 30, 2019

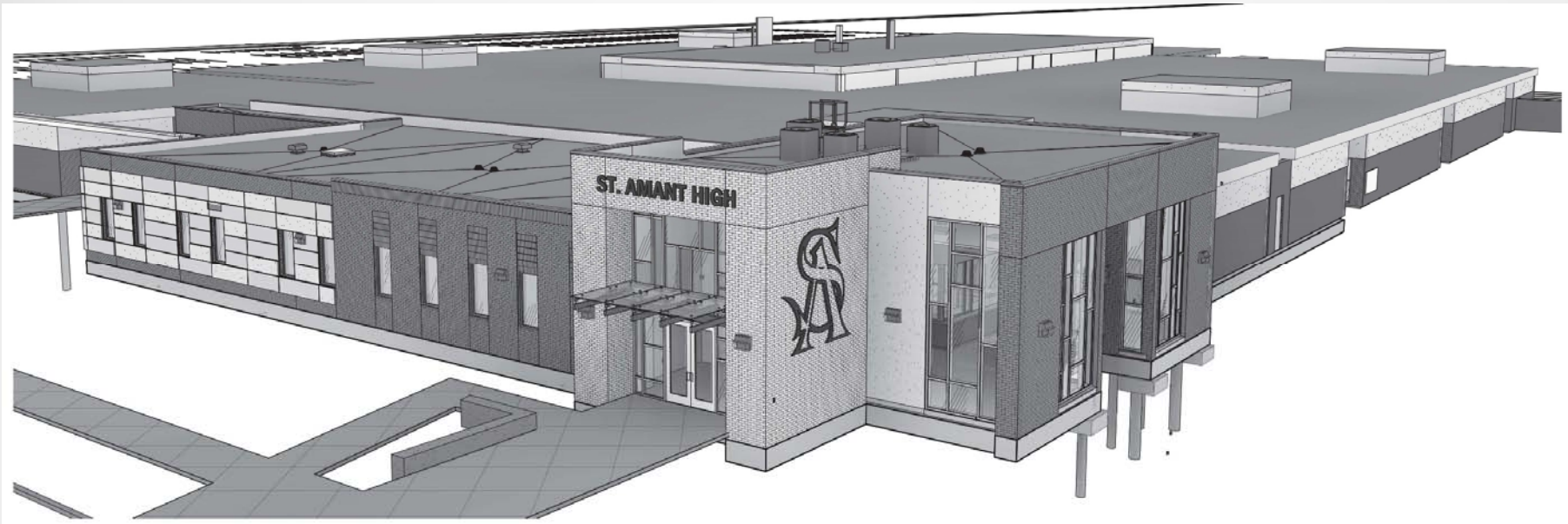
PLAN TO ADD SECURITY
PORTAL WHICH WILL ALSO
HELP TO MATCH THE FAÇADE
OF THE ACADEMY

REPURPOSE THE CAFETERIA

RENOVATE THE OFFICE AND
LIBRARY



ST. AMANT HIGH – CORE RENOVATION



MAY 7, 2019

ST. AMANT HIGH – CORE RENOVATION



MAY 7, 2019

ST. AMANT HIGH – CORE RENOVATION



DISTRICTWIDE COVERED PLAY PAVILLIONS



OAK GROVE PRIMARY - MODEL PAVILLION

STATUS OF \$1,500,000.00 FUND

OAK GROVE AND GALVEZ PRIMARY ALREADY HAD PAVILLIONS

WE HAVE CONSTRUCTED 11 PAVILLIONS :
SORRENTO PRIMARY, DONALDSONVILLE
PRIMARY, CENTRAL PRIMARY, PRAIRIEVILLE
PRIMARY, SPANISH LAKE PRIMARY, DUPLESSIS
PRIMARY, LAKESIDE PRIMARY, CARVER PRIMARY,
PECAN GROVE PRIMARY, LOWERY ELEMENTARY,
HEAD START

THE DUTCHTOWN PRIMARY PAVILLION IS
INCLUDED IN THE CLASSROOM PROJECT

AND THE 3 NEW PRIMARY SCHOOLS PAVILLIONS
WILL BE BUILT WITH THEIR BOND PROJECTS

ST. AMANT PRIMARY AND LAKE ELEMENTARY
PAVILLIONS ARE UNDER CONSTRUCTION

CURRENTLY THESE PAVILLION CONTRACTS ARE
WITHIN THE FUNDS AVAILABLE

MAY 7, 2019

33

DISTRICTWIDE COVERED PLAY PAVILLIONS



SORRENTO PRIMARY



DONALDSONVILLE PRIMARY



CENTRAL PRIMARY



PRAIRIEVILLE PRIMARY



SPANISH LAKE PRIMARY



DUPLESSIS PRIMARY

MAY 7, 2019

DISTRICTWIDE COVERED PLAY PAVILLIONS



LAKESIDE PRIMARY



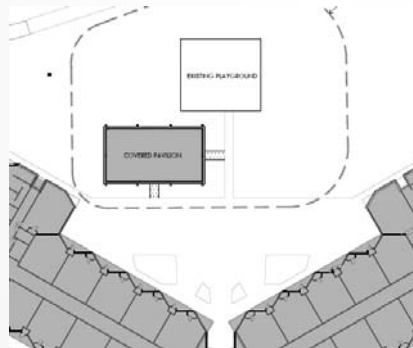
CARVER PRIMARY



PECAN GROVE PRIMARY



DUTCHTOWN PRIMARY



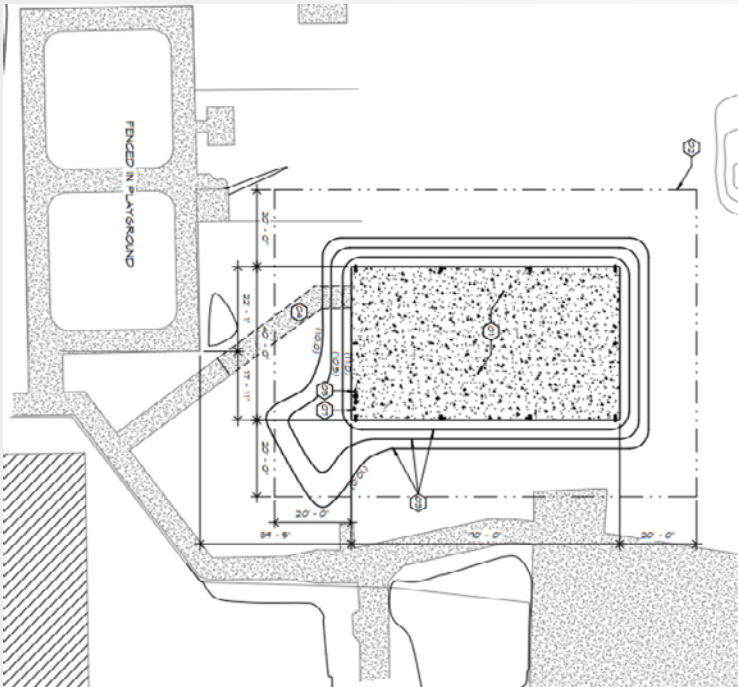
LOWERY ELEMENTARY



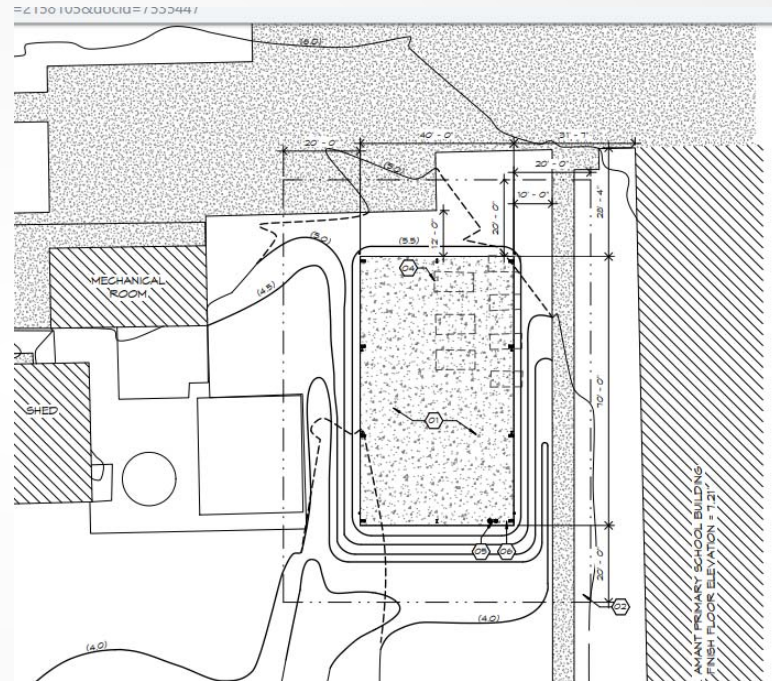
ASCENSION HEAD START

MAY 7, 2019

DISTRICTWIDE COVERED PLAY PAVILLIONS



LAKE ELEMENTARY



ST AMANT PRIMARY

MAY 7, 2019

FUTURE HIGH SCHOOL – SITE PLANNING AND PERMITTING

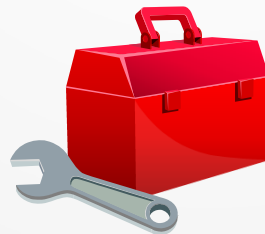


STATUS – DESIGN PHASE

REMSON HALEY HERPIN AND DOMAIN DESIGN ARE WORKING ON THE BUILDING AND SITE DESIGN

TOPO/BOUNDARY SURVEY COMPLETE

WETLANDS DETERMINATION IS COMPLETE

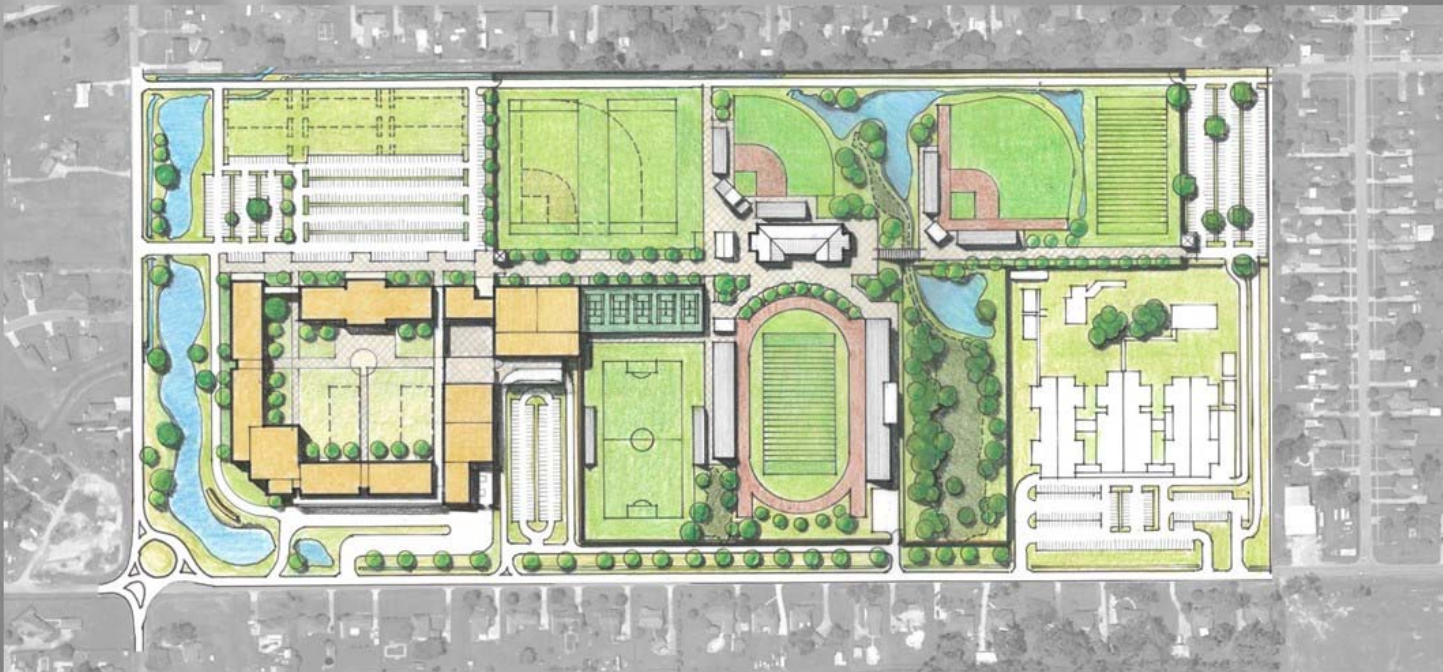


MAY 7, 2019

FUTURE HIGH SCHOOL – SITE PLANNING AND PERMITTING

REMSON | HALEY | HERPIN ARCHITECTS + DOMAIN ARCHITECTURE + GSA CONSULTING ENGINEERS

#ASCENSIONSTRONG



MAY 7, 2019

38

EAST ASCENSION HIGH – RENOVATION AND ADDITION

PROGRAM CONFIRMATION PHASE – THE CURRENT PROJECT IS INTENDED TO BE THE LAST PHASE OF OUR FRESHMAN ACADEMY WORK, WHICH RENOVATES SPECIFIC AREAS OF THE MAIN CAMPUS TO ACCOUNT FOR THE ENROLLMENT GOAL OF 2200 STUDENTS. THIS IS ALL PART OF THE FRESHMAN ACADEMY EXPANSION PROGRAM.

THE DESIGN TEAM IS WORKING ON ADAPTING THE CURRENT PROJECT SCOPE TO ACCOUNT FOR SOME FORWARD THINKING BY THE STRATEGIC PLANNING COMMITTEE. THE SPC RECOGNIZED THAT MUCH OF THE ORIGINAL CAMPUS IS IN NEED OF MAJOR RENOVATIONS, WHICH MAY BE INCLUDED IN THE NEXT LIST OF IMPROVEMENTS TO OUR SCHOOLS. THE DESIGN TEAM IS CURRENTLY WORKING TO ENSURE THAT THE MONEY SPENT ON THE 2016 BOND PROJECT WILL BE POSITIONED IN SUCH A WAY TO ALLOW FOR POTENTIAL FUTURE CAMPUS RENOVATIONS WITHOUT CONFLICT.



MAY 7, 2019

