



**We are YOUR
School District!**



INTRODUCTIONS



To view video slide head to: <https://www.youtube.com/watch?v=DrukIvIBvfA>

OUR MISSION

Focusing on Each and Every Student

OUR VISION

Creating Opportunities

OUR PURPOSE

Providing Quality Experiences Every Day





Meeting Education Goals

The Ascension Public Schools system is comprised of over 22,800 students in 27 schools. It is the largest employer in the parish with more than 2,800 employees, including teachers, administrators and support personnel. Our schools are ranked in the top tier in state academic performance.

2017-18 State Report Card



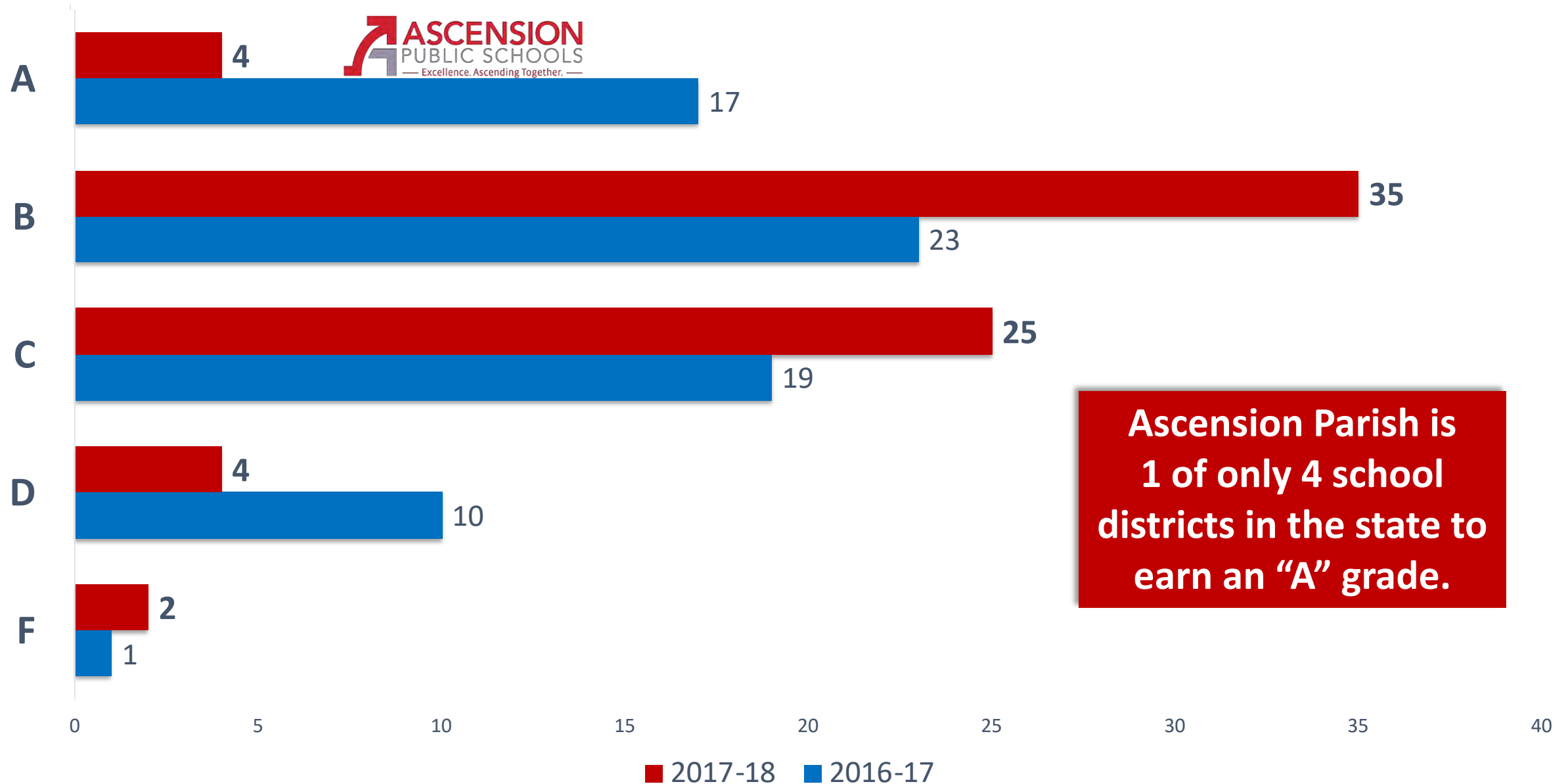
91.2 A

#2

in the state



LOUISIANA'S SCHOOL DISTRICT LETTER GRADES

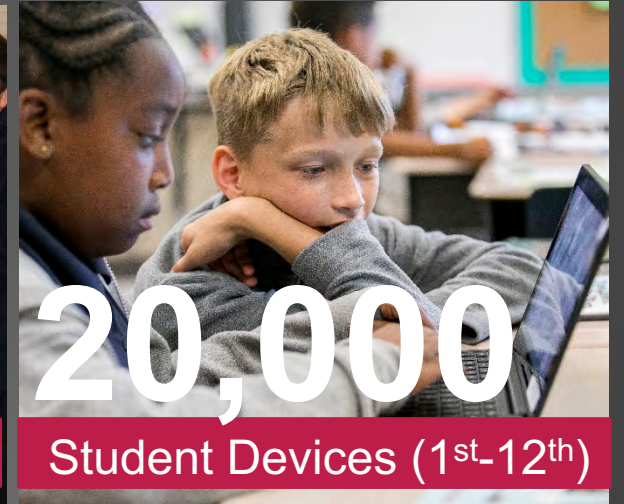


ACCOMPLISHMENTS

- ✓ Ascension is #1 for Students with Disabilities
- ✓ Ascension is #2 for Economically Disadvantaged Students
- ✓ Ascension is #1 in 2018 ELA & Math in new academic Growth Scores
- ✓ Nearly all 27 schools earned "A" and "B" grades for Progress
- ✓ 21 schools earned Top Gains and 9 schools earned Equity Honoree designations



More Than a Letter Grade...



AWARD-WINNING OPERATIONS

- ✓ Excellence in Financial Reporting (international)
- ✓ Distinguished Budget Presentation Award (international)
- ✓ Excellence in a School Information Campaign (national)
- ✓ National Illuminator of the Year (instructional technology)
- ✓ Excellence in Classroom Technology Usage (state)



Largest Employer in
Ascension Parish!



BY THE NUMBERS

20,000 COMPUTING DEVICES in the
hands of 1st-12th graders

\$30,405,000 in GOODS (615k items)
purchased and delivered in a year

3,300,000 NUTRITIOUS MEALS
served each year

3,250,000 SQUARE FEET
maintained by custodians

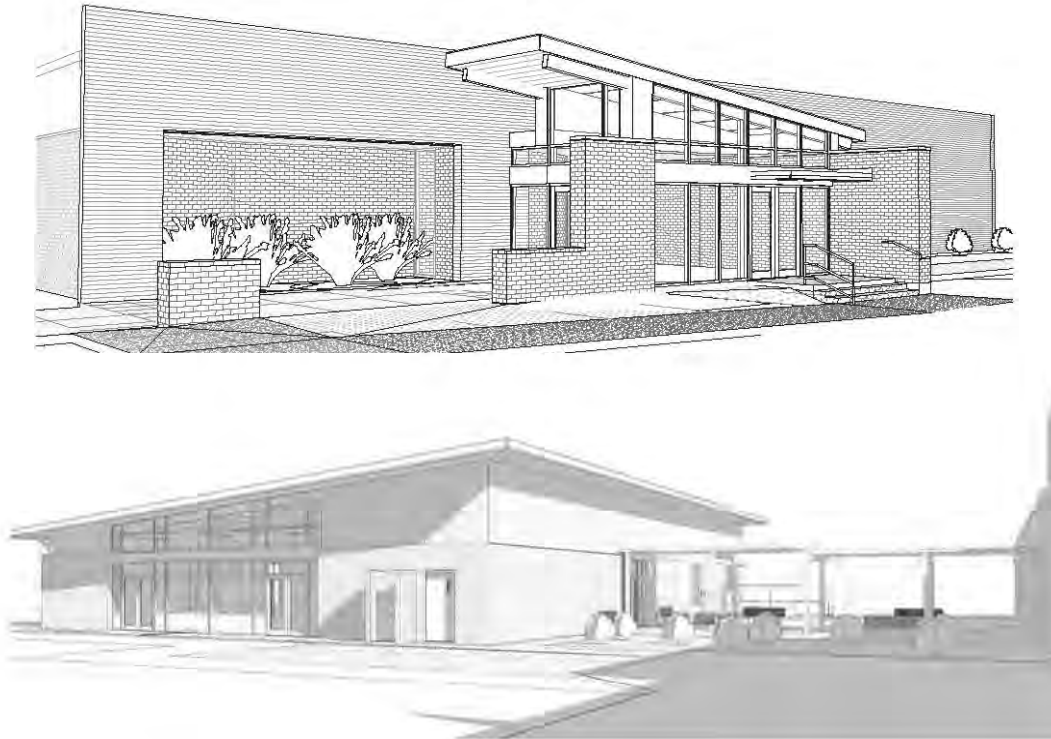


Meeting Parish Population Growth

We are currently working through a major \$120 million investment in capital outlay projects including the construction of 4 new schools to meet population growth.

www.apsb.org/construction

APPLe Digital Academy & Career Center



Ascension Head Start



BULLION PRIMARY SCHOOL

Coming Fall 2019



Colors: Black/Red
Mascot: Bear Cubs

BLUFF MIDDLE SCHOOL

Coming 2020-21



BLUFF RIDGE PRIMARY SCHOOL

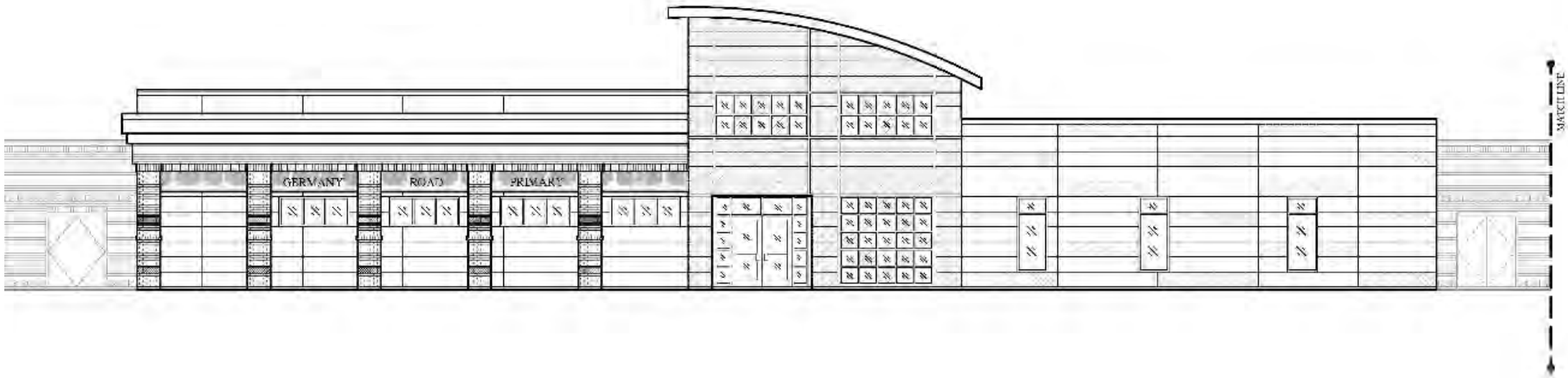
Coming 2020-21



Colors: Navy/Grey
Mascot: Falcons

SUGAR MILL PRIMARY SCHOOL

Coming 2020-21



Colors: Vermilion/Grey
Mascot: Knights

To view video slide head to: <https://youtu.be/pjNfCUXtipU>



Ascension Schools Funding

RENEWAL

Essentials of Academic Excellence



- Essential funding for school nursing programs, school bus operations, early childhood and summer school programs, counseling programs, textbooks, libraries, multimedia services, classroom furniture and band and athletic equipment
- Millage generates approximately \$9 million per year
- First local school millage ever approved by Ascension Parish voters in 1983 to fund school operations

- Essential funding for custodial and grounds services, utilities, flood and liability insurance, and general maintenance and repairs
- Millage generates approximately \$3 million per year
- Dedicated funding source created by Ascension Parish voters in 1994

VOTE SATURDAY, MARCH 30, 2019



ASCENSION

THANK YOU

www.apsb.org



VOTE MARCH 30TH

EARLY VOTING: March 16th – March 23rd